



LTRO Locate & Target & Remaining & Oil

LTRO Blog objectives are to:

share our knowledge and thoughts with others, include practical and actionable advice, and share the step-by-step methods on how to get something done, and initiate conversations with our customers, and get feedback on our product.

The 3 powerful tools to locate and target remaining oil in mature fields.

Good people Good Skills Good Interpretations

with displays to convince shareholders to invest in surveillance, work programs and new drill wells.

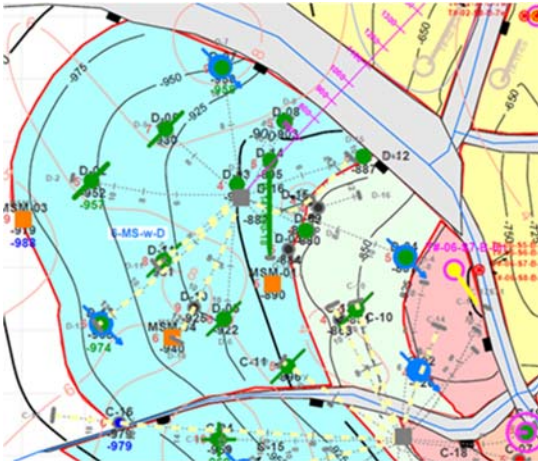


Accurate interpretations and displays are needed to document the interpretations of the location of the remaining oil and how to target it.

Good maps that show the remaining oil must match and document

1. All data
2. Flow unit material balance
3. Near well fractional flow saturation

Clean Maps that show the data and the interpretation documenting:



Post production oil distribution

Quantification of past production drainage areas, Best Estimates of current contacts and uncertainty
Identification and evaluation of possible drill well or work over leads

Optimizing current production & manage reservoirs & add new value with workovers & new drill well targets.

Reduce uncertainty with data acquisition Surveillance data, 4D seismic Reduce uncertainty with fit for purpose 3D model

These are the tasks for the subsurface asset teams, and should be their main target objective.